



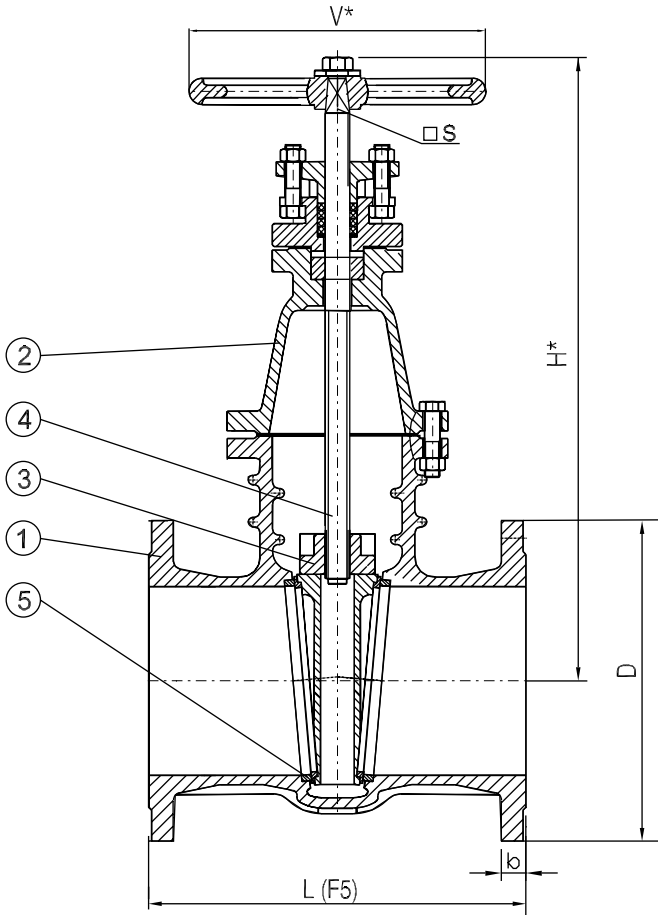
# ITALIANA VALVOLE INDUSTRIALI TORINO

Produzione e vendita apparecchiature idrauliche e industriali

Saracinesca a corpo ovale in ghisa - vite interna

Cast iron gate valve oval body - non-rising stem

PN: 10  
DN: 40-600



MATERIALI		
POS.	DENOMINAZIONE	MATERIALE
1	CORPO	GJL-250 (GJS-400-15)
2	COPERCHIO	GJL-250 (GJS-400-15)
3	CUNEO	GJL-250 (GJS-400-15)
4	STELO DI MANOVRA	ACCIAIO INOX X20 Cr13
5	SEDI DI TENUTA	OTTONE CuZn39 Pb2

MATERIALS		
POS.	DENOMINATION	MATERIAL
1	BODY	GJL-250 (GJS-400-15)
2	BONNET	GJL-250 (GJS-400-15)
3	WEDGE	GJL-250 (GJS-400-15)
4	STEM	STAINLESS STEEL X20 Cr13
5	SEAT	BRASS CuZn39 Pb2

## DIMENSIONI DI INGOMBRO / DIMENSIONS

DN	Foratura flange Drilling flanges	L	H*	PN	D	b	V*/ES	Peso /Weight Kg
40	PN10	240	255	10	150	18	160/12	14
50	PN10	250	263	10	165	20	160/12	15
65	PN10	270	287	10	185	20	160/12	19
80	PN10	280	310	10	200	22	160/12	24
100	PN10	300	358	10	220	22	200/14	30
125	PN10	325	400	10	250	24	250/17	45
150	PN10	350	430	10	285	24	250/17	57
200	PN10	400	598	10	340	26	315/19	107
250	PN10	450	675	10	395	28	400/24	146
300	PN10	500	755	10	445	28	400/24	205
350	PN10	550	927	10	505	30	500/27	287
400	PN10	600	985	10	565	32	500/27	360
500	PN10	700	1104	10	670	34	600/32	536
600	PN10	800	1286	10	780	36	600/32	855

H\*-V\* = Quote indicative / Indicative dimensions