



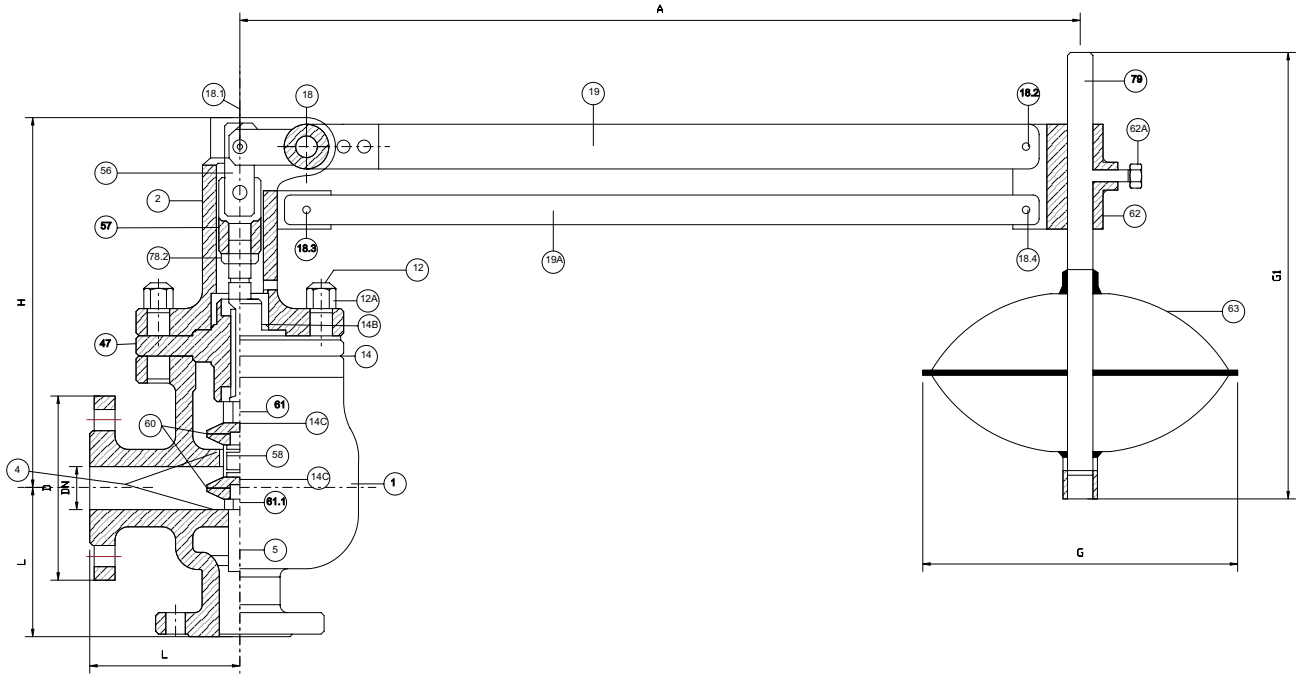
ITALIANA VALVOLE INDUSTRIALI TORINO

Produzione e vendita apparecchiature idrauliche e industriali

Valvola a galleggiante a doppia sede,
equilibrata ad angolo

Double balanced housing float valves,
angle type

PN: 16
DN: 20-400



DIMENSIONI DI INGOMBRO / DIMENSIONS						
DN	L	H	A	G	G1	D
20	100	240	765	200	600	105
25	100	240	765	200	600	115
32	100	240	765	200	600	140
40	115	250	765	300	600	150
50	115	250	765	300	600	165
65	150	275	765	400	600	185
80	150	275	765	400	600	200
100	175	320	860	400	600	220
125	200	335	860	400	600	250
150	225	370	860	500	1000	285
200	250	390	1200	500	1000	340
250	300	530	1200	500	1000	405
300	350	570	1200	600	1000	460
350	400	***	1200	600	1000	520
400	***	***	1200	600	1000	580

MATERIALI		
POS.	DENOMINAZIONE	MATERIALE
1	CORPO	EN GJL-250 (UNI EN 1561/98-ISO185)
2	CAPPELLO	EN GJL-250 (UNI EN 1561/98-ISO185)
4	SEDI	AISI304 (1.4301-EN10088)
5	STELO	AISI420 (1.4021-EN10088)
12A	DADI	CLASS 5.8 (UNI EN20898)
12	PRIGIONIERI	CLASS 5.8 (UNI EN20898)
14	GUARNIZIONI	FIBRE DI CARBONIO E GRAFITE LEGATE NBR
14B-14C	O-RING	NBR (DIN-ISO1629)
18	SPINE	ISO8752
18.01	SPINE	ISO2338
19	PRIMA LEVA	FE360 (UNI 6014/74)
19A	SECONDA LEVA	FE380 (UNI 6014/74)
47	DIAPRAMMA	EN GJL-250 (UNI EN 1561/98-ISO185)
56	SNODO	FE360 (UNI 6014/74)
57	GIUNTO	AVP-9SMNPB36
58	GUARNIZIONE DI TENUITA	EPDM (DIN-ISO-1629)
60	OTTURATORE IN 2PZ	A105-73/UNI7070-EN10025
61-61.1	DADI	AVP-9SMNPB36
62	SUPPORTO GALLEGGIANTE	EN GJL-250 (UNI EN 1561/98-ISO185)
62A	BULLONE TDE	CLASS 5.8 (UNI EN20898)
63	GALLEGGIANTE	AISI304 (1.4301-EN10088)
79	ASTA GALLEGGIANTE	UNI 8863
78.2	DADI	OTTONE/AVP-9SMNPB36



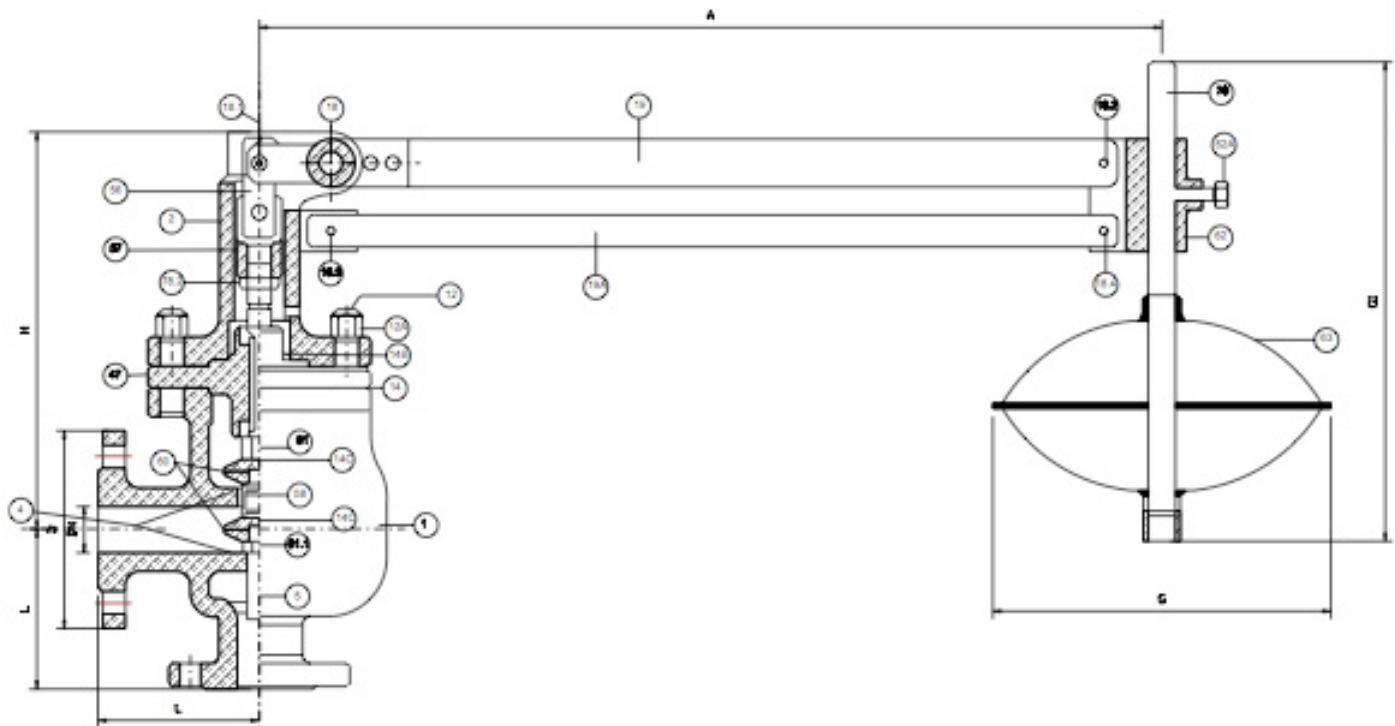
ITALIANA VALVOLE INDUSTRIALI TORINO

Produzione e vendita apparecchiature idrauliche e industriali

Valvola a galleggiante a doppia sede,
equilibrata ad angolo

Double balanced housing float valves,
angle type

PN: 16
DN: 20-400



DIMENSIONI DI INGOMBRO / DIMENSIONS

DN	L	H	A	G	G1	D
20	100	240	765	200	600	105
25	100	240	765	200	600	115
32	100	240	765	200	600	140
40	115	250	765	300	600	150
50	115	250	765	300	600	165
65	150	275	765	400	600	185
80	150	275	765	400	600	200
100	175	320	860	400	600	220
125	200	335	860	400	600	250
150	225	370	860	500	1000	285
200	250	390	1200	500	1000	340
250	300	530	1200	500	1000	405
300	350	570	1200	600	1000	460
350	400	***	1200	600	1000	520
400	***	***	1200	600	1000	580

MATERIALS

POS.	DENOMINATION	MATERIALS
1	BODY	GJL250 (UNI EN 1561/98-ISO185)
2	BONNET	GJL250 (UNI EN 1561/98-ISO185)
4	SEAT	AISI304 (1.4301-EN10088)
5	STEM	AISI420 (1.4021-EN10088)
12A	BOLT	CLASS 5.8 (UNI EN20898)
12	STUD BOLT	CLASS 5.8 (UNI EN20898)
14	GASKET	CARBON FIBER
14B-14C	O-RING	NBR (DIN-ISO1629)
18	PIN	ISO8752
18.01	PIN	ISO2338
19	FIRST LEVER	FE360 (UNI 6014/74)
19A	SECOND LEVER	FE380 (UNI 6014/74)
47	DIAPHRAGM	GJL250 (UNI EN 1561/98-ISO185)
56	JOINT	FE360 (UNI 6014/74)
57	JOINT	AVP-9SMNPB36
58	SEAT RING	EPDM (DIN-ISO-1629)
60	OBTURATOR	A105-73 /UNI7070-EN10025
61-61.1	NUTS	AVP-9SMNPB36
62	FLOAT SUPPORT	GJL250 (UNI EN 1561/98-ISO185)
62A	BOLT TDE	CLASS 5.8 (UNI EN20898)
63	FLOAT	AISI304 (1.4301-EN10088)
79	FLOAT STEM	UNI 8863
78.2	NUTS	BRASS /AVP-9SMNPB36