



ITALIANA VALVOLE INDUSTRIALI TORINO

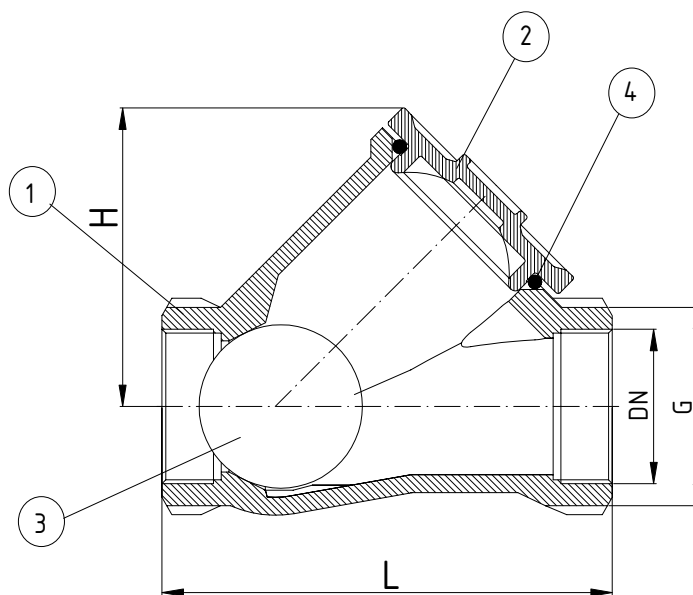
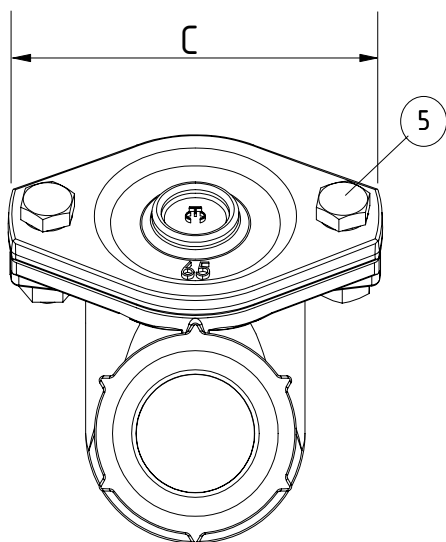
Produzione e vendita apparecchiature idrauliche e industriali

Valvola di ritegno a palla filettata

Threaded ball check valve

PN: 10-16

DN: 25-80



MATERIALI		
POS	DENOMINAZIONE	MATERIALE
1	CORPO	EN GJS 400-15 (EN GJL-250)
2	COPERCHIO	EN GJS 400-15 (EN GJL-250)
3	SFERA	RESINA FENOLICA
4	O-RING	NITRILE
5	BULLONERIA	STAINLESS STEEL

MATERIALI		
POS	DENOMINAZIONE	MATERIALE
1	BODY	EN GJS 400-15 (EN GJL-250)
2	BONNET	EN GJS 400-15 (EN GJL-250)
3	BALL	PHENOLIC RESIN
4	O-RING	NITRILE
5	SETSCREWS	STAINLESS STEEL

DIMENSIONI DI INGOMBRO / DIMENSIONS					
DN [mm]	G	L [mm]	H [mm]	C [mm]	PESO / WEIGHT [Kg]
	[cal]				
25	1"	120	75	110	1,8
32	1 1/4"	140	75	110	2,3
40	1 1/2"	150	89	120	3
50	2"	220	113	140	4,6
65	2 1/2"	234	135	155	6,5
80	3"	248	160	185	8,1