

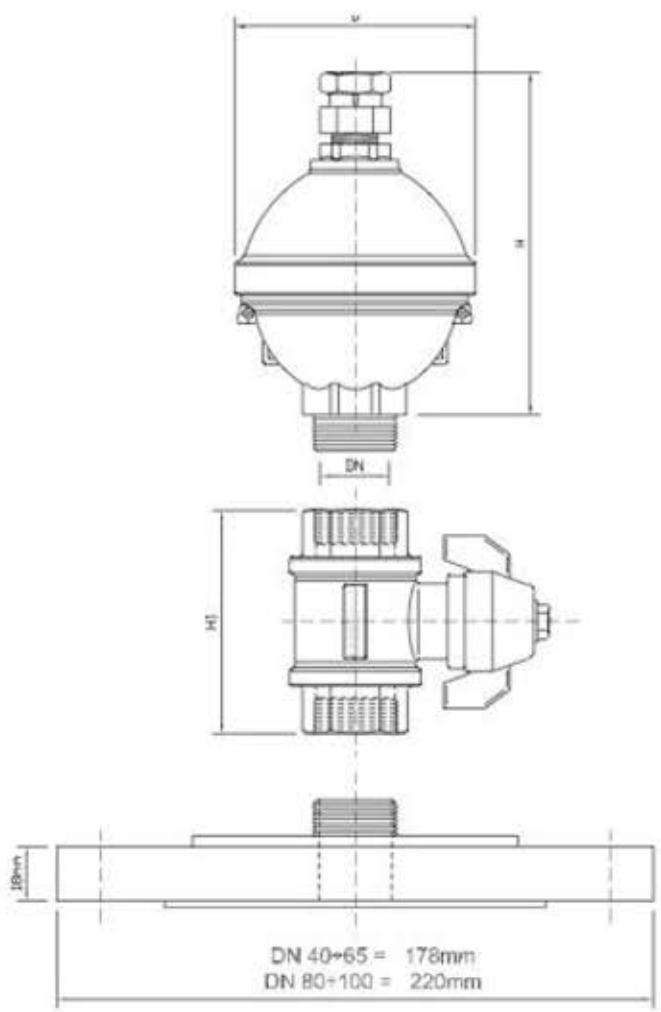
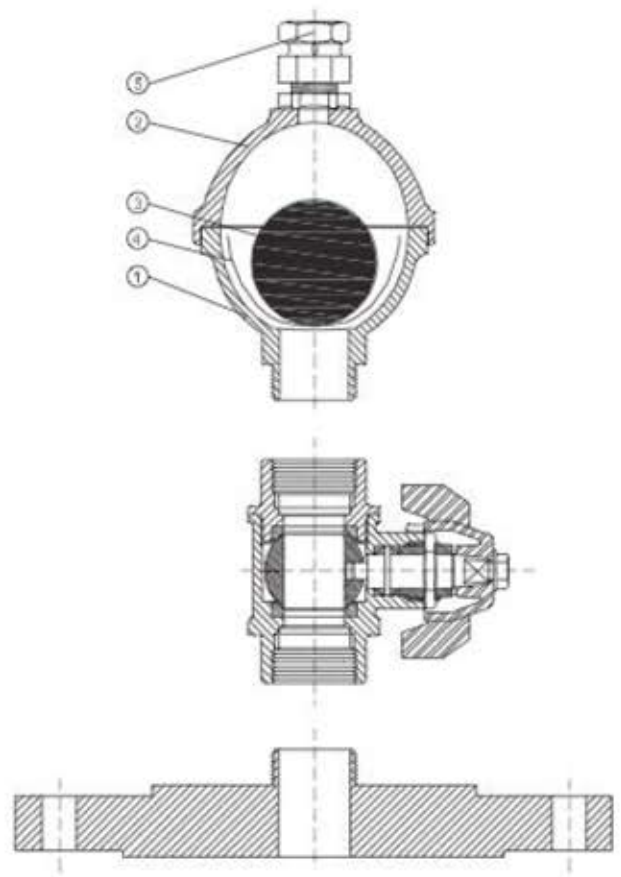


# ITALIANA VALVOLE INDUSTRIALI TORINO

Produzione e vendita apparecchiature idrauliche e industriali

Sfiato automatico tipo "Roma"  
Air relief valve type "Roma"

PN: 10  
DN: 40-100



MATERIALI		
POS.	DENOMINAZIONE	MATERIALE
1	CORPO	OTTONE UNI EN 12165-98
2	CAPPUCCIO	OTTONE UNI EN 12165-98
3	SFERA GALLEGGIANTE	PTS-THERMOFLEX
4	SCODELLINO FRANGISPRUZZO	PROPILENE BASSA DENSITA'
5	ORIFIZIO SUPERIORE	OTTONE UNI EN 12165-98

MATERIALS		
POS.	DENOMINATION	MATERIAL
1	BODY	BRASS UNI EN 12165-98
2	COVER	BRASS UNI EN 12165-98
3	FLOAT	PTS-THERMOFLEX
4	SPRAY BRAKER DEVICE	LOW DENSITY PROPYLENE
5	ORIFICE	BRASS UNI EN 12165-98

DIMENSIONI DI INGOMBRO/ DIMENSIONS			
DN	D	H	PESO /WEIGHT kg
3/4"	85,5	126	2
1"	85,5	126	2

DIMENSIONI ASSEMBLATO /ASSEMBLY DIMENSION					
DN	D	H	H1	PN	PESO /WEIGHT kg
40	85,5	126	89	10	4
50	85,5	126	89	10	6
65	85,5	126	89	10	6
80	85,5	126	89	10	8
100	85,5	126	89	10	8